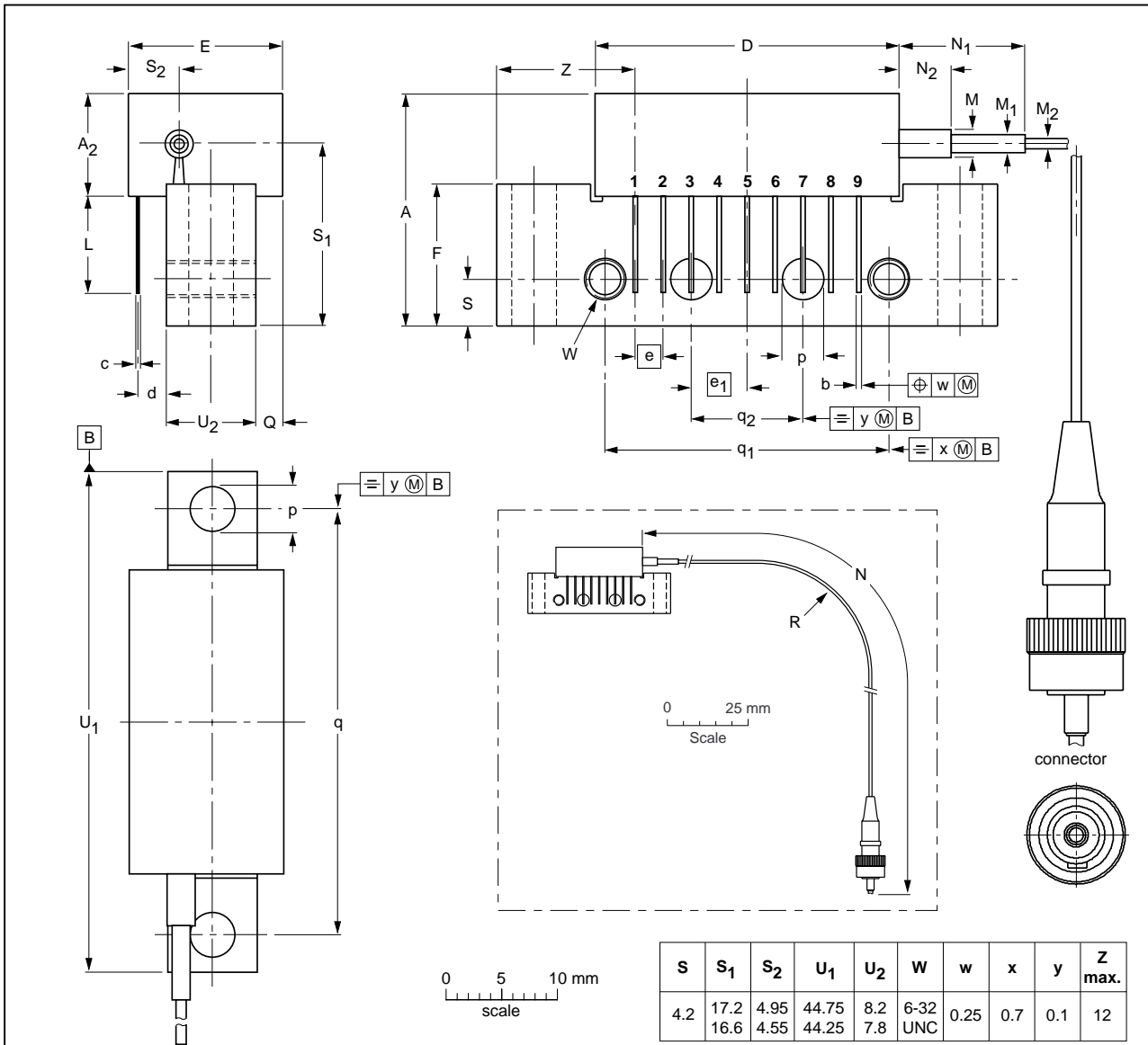


Rectangular single-ended package; aluminium flange; 2 vertical mounting holes; 2 x 6-32 UNC and 2 extra horizontal mounting holes; optical input with connector; 9 gold-plated in-line leads SOT115AF



S	S <sub>1</sub>	S <sub>2</sub>	U <sub>1</sub>	U <sub>2</sub>	W	w	x	y	Z max.
4.2	17.2	4.95	44.75	8.2	6-32	0.25	0.7	0.1	12
	16.6	4.55	44.25	7.8	UNC				

DIMENSIONS (mm are the original dimensions)

UNIT	A max.	A <sub>2</sub> max.	b	c	D max.	d max.	E max.	e	e <sub>1</sub>	F	L min.	M	M <sub>1</sub>	M <sub>2</sub>	N	N <sub>1</sub>	N <sub>2</sub>	p	Q max.	q	q <sub>1</sub>	q <sub>2</sub>	R min.
mm	20.8	9.1	0.51 0.38	0.25	27.2	2.54	13.75	2.54	5.08	12.7	8.8	2.5	1.6	0.9	861 746	10.7 0.0	5 0	4.15 3.85	2.4	38.1	25.4	10.2	35

OUTLINE VERSION	REFERENCES				EUROPEAN PROJECTION	ISSUE DATE
	IEC	JEDEC	JEITA			
SOT115AF						02-03-18 04-02-05